

State of Wyoming Corner Record

(In compliance with the **CORNER PERPETUATION AND FILING ACT**, Wyoming Statutes, 1997 Section 33-29-140 et. seq, and the Rules and Regulations of the Board of Professional Engineers and Professional Land Surveyors)

Reverse side of this form may be used if more space is needed.

ORIGINAL RECORD: "SET GRANITE BOULDER 15"x12"x7" FOR 1/4 SEC. COR."

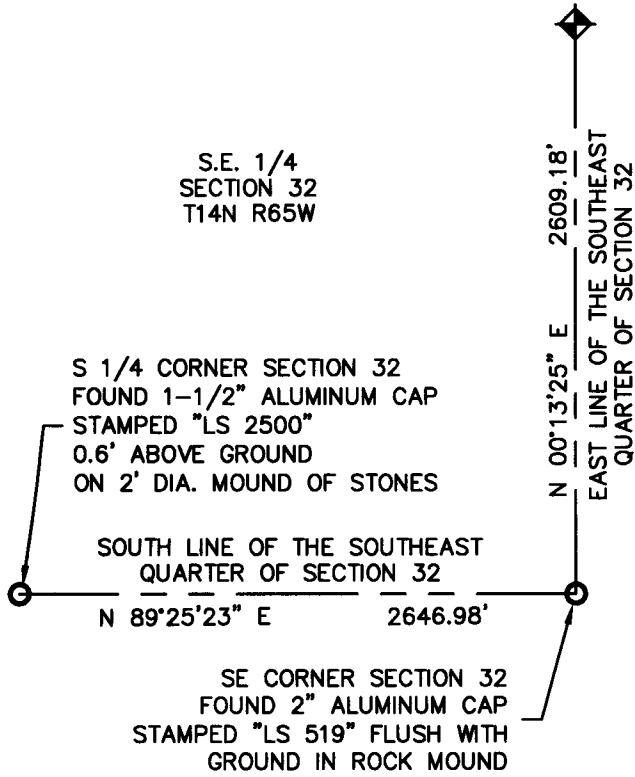
FOUND: NO ORIGINAL STONE OR ACCESSORIES FOUND.

SET: 30" LONG NO. 6 REBAR WITH A 3-1/4" ALUMINUM CAP STAMPED "PLS 14089" 3.5' SOUTHEAST OF FENCE CORNER. POSITION COMPUTED FROM "HR RANCH FIRST FILING, REC. NO. 306359", SET THREE (3) REFERENCE MONUMENTS IN FENCE LINE AS SHOWN BELOW.

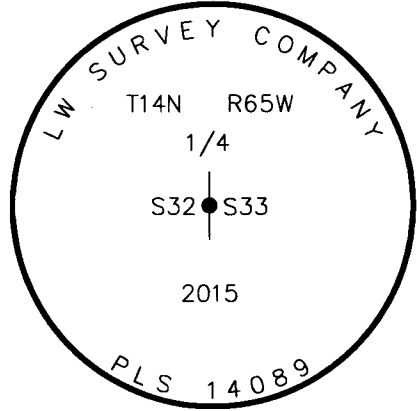
NOTE: BEARINGS AND DISTANCES HERERON ARE BASED ON UTM ZONE 13 NORTH - NAD83/NAVD88 AND ARE SHOWN AT GRID. IN ORDER TO OBTAIN GROUND DISTANCES USE A COMBINED SCALE FACTOR OF 1.00067428.

- = SET 1-1/2" BRASS TAG WITH 1/2" MAG NAIL IN WOOD FENCE POST, STAMPED "PLS 14089"
- ◆ = EAST QUARTER CORNER OF SECTION 32 SET 30" LONG NO. 6 REBAR WITH 3-1/4" ALUMINUM CAP STAMPED "PLS 14089"

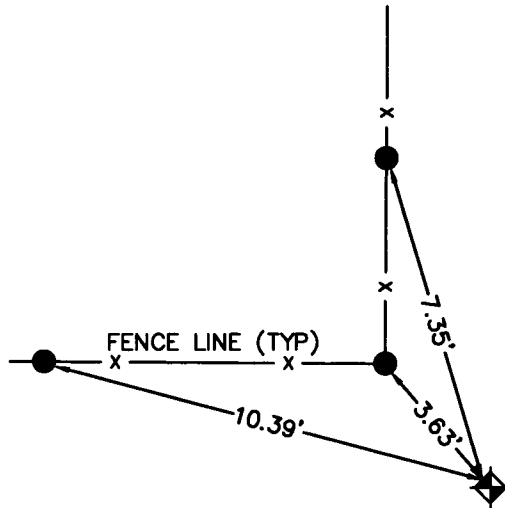
Monument Location



N.T.S.



Monument Inscription



Reference Monument Location

Date of Field Work: 02/12/2015

Office Reference: Project #50988

Cross Index Plat

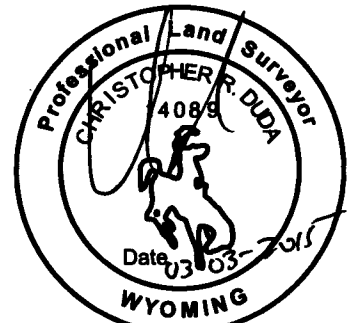
	1	2	3	4	5	6	7	8	9	10	11	12	13	14	15	16	17	18	19	20	21	22	23	24	25	
A	+	+	+	+	+	+	+	+	+	+	+	+	+	+	+	+	+	+	+	+	+	+	+	+	+	A
B	+	+	+	+	+	+	+	+	+	+	+	+	+	+	+	+	+	+	+	+	+	+	+	+	+	B
C	+	6	+	5	+	+	+	+	4	+	+	+	+	3	+	+	+	+	+	2	+	+	+	+	1	C
D	+	+	+	+	+	+	+	+	+	+	+	+	+	+	+	+	+	+	+	+	+	+	+	+	+	D
E	+	+	+	+	+	+	+	+	+	+	+	+	+	+	+	+	+	+	+	+	+	+	+	+	+	E
F	+	+	+	+	+	+	+	+	+	+	+	+	+	+	+	+	+	+	+	+	+	+	+	+	+	F
G	+	7	+	8	+	+	+	+	9	+	+	+	+	10	+	+	+	+	+	11	+	+	+	+	12	G
H	+	+	+	+	+	+	+	+	+	+	+	+	+	+	+	+	+	+	+	+	+	+	+	+	+	H
I	+	+	+	+	+	+	+	+	+	+	+	+	+	+	+	+	+	+	+	+	+	+	+	+	+	I
J	+	+	+	+	+	+	+	+	+	+	+	+	+	+	+	+	+	+	+	+	+	+	+	+	+	J
K	+	+	+	+	+	+	+	+	+	+	+	+	+	+	+	+	+	+	+	+	+	+	+	+	+	K
L	+	18	+	17	+	+	+	+	16	+	+	+	+	15	+	+	+	+	+	14	+	+	+	+	13	L
M	+	+	+	+	+	+	+	+	+	+	+	+	+	+	+	+	+	+	+	+	+	+	+	+	+	M
N	+	+	+	+	+	+	+	+	+	+	+	+	+	+	+	+	+	+	+	+	+	+	+	+	+	N
O	+	+	+	+	+	+	+	+	+	+	+	+	+	+	+	+	+	+	+	+	+	+	+	+	+	O
P	+	19	+	20	+	+	+	+	21	+	+	+	+	22	+	+	+	+	+	23	+	+	+	+	24	P
Q	+	+	+	+	+	+	+	+	+	+	+	+	+	+	+	+	+	+	+	+	+	+	+	+	+	Q
R	+	+	+	+	+	+	+	+	+	+	+	+	+	+	+	+	+	+	+	+	+	+	+	+	+	R
S	+	+	+	+	+	+	+	+	+	+	+	+	+	+	+	+	+	+	+	+	+	+	+	+	+	S
T	+	30	+	29	+	+	+	+	28	+	+	+	+	27	+	+	+	+	+	26	+	+	+	+	25	T
U	+	+	+	+	+	+	+	+	+	+	+	+	+	+	+	+	+	+	+	+	+	+	+	+	+	U
V	+	+	+	+	+	+	+	+	+	+	+	+	+	+	+	+	+	+	+	+	+	+	+	+	+	V
W	+	+	+	+	+	+	+	+	+	+	+	+	+	+	+	+	+	+	+	+	+	+	+	+	+	W
X	+	31	+	32	+	+	+	+	33	+	+	+	+	34	+	+	+	+	+	35	+	+	+	+	36	X
Y	+	+	+	+	+	+	+	+	+	+	+	+	+	+	+	+	+	+	+	+	+	+	+	+	+	Y
Z	+	+	+	+	+	+	+	+	+	+	+	+	+	+	+	+	+	+	+	+	+	+	+	+	+	Z

Firm/Agency, Address

Christopher R. Duda, PLS 14089
LW Survey Co.
12345 W. Alameda Parkway
Suite 205
Lakewood, CO 80228
Telephone Number: (303) 658-0358

This corner record was prepared by me or under my direction and supervision.

SEAL & SIGNATURE



RECP #: 658638
RECORDED 4/13/2015 AT 9:54 AM BK# 2438 PG# 925
Debra K. Lathrop, CLERK OF LARAMIE COUNTY, WY PAGE 1 OF 1

Corner Name East Quarter Corner Section 32, T 14 N, R 65 W, 6th P.M. Cross-Index No.: X-9

County: Laramie Wyoming

SBRPEPLS/PLSW: March 1994; PLSW January 1998